

ON-Q[®] Catheter

PATIENT GUIDELINE INSERT

DESCRIPTION: The catheter is a small tube near your incision site that is connected to your infusion pump. The color of the catheter may be clear or golden.

REMOVAL OF CATHETER

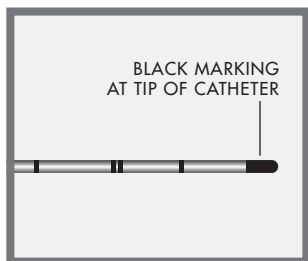
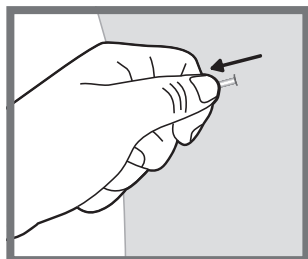
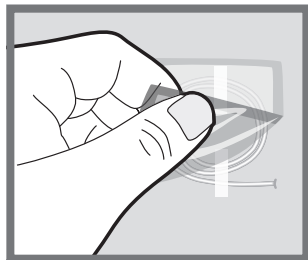
If your doctor has instructed you to remove the catheter, then **follow their instructions** keeping in mind these key steps:*

- Remove the dressing covering the catheter site.
- Remove any skin adhesive strips.
- Grasp the catheter close to the skin and **gently** pull on the catheter.

It should be easy to remove and not painful. Do not tug or quickly pull on the catheter during removal. If it becomes hard to remove or stretches, then **STOP**. Call your doctor. Continued pulling could break the catheter.

- **Do not** cut or pull hard to remove the catheter.
- **WARNING:** After you remove the catheter, check the catheter tip for the black marking to ensure the entire catheter was removed. Call your doctor if you don't see the black marking.
- Place a bandage over the catheter site as instructed by your doctor.

* Repeat these steps for other catheter site if you have more than one catheter.



WARNING: The following symptoms may represent a serious medical condition. Immediately close the clamp on the pump tubing and call your doctor to prevent serious patient injury.

- Increase in pain
- Difficulty breathing
- Redness, warmth, discharge or excessive bleeding from the catheter site.
- Pain, swelling or a large bruise around the catheter site
- Dizziness, light headedness
- Blurred vision
- Ringing, buzzing in your ears
- Metal taste in your mouth
- Numbness and/or tingling around your mouth, fingers or toes
- Drowsiness
- Confusion
- Other side effects: _____

NUMBNESS

Be aware that you may experience loss of feeling at and around the surgical area. If numbness occurs, take proper measures to avoid injury. Be careful when placing hot or cold items on a numb limb.

PRECAUTIONS

- Do not reuse.
- Protect the pump and catheter site from water according to your doctor's instructions.



FOR MORE PRODUCT RELATED INFORMATION CALL
800.448.3569 or **949.206.2700**

20202 Windrow Drive | Lake Forest | California 92630

FOR PUBLISHED CLINICAL STUDIES VISIT
www.iflo.com
www.AskYourSurgeon.com

CE European Representative:
MPS Medical Product Service GmbH
Borngasse 20, 35619 Braunfels
Germany
0123

Rx only.

*I-Flow and ON-Q are registered trademarks of I-Flow Corporation.
© 2010 I-Flow Corporation. All right reserved.*